

**SCP SCIENCE**

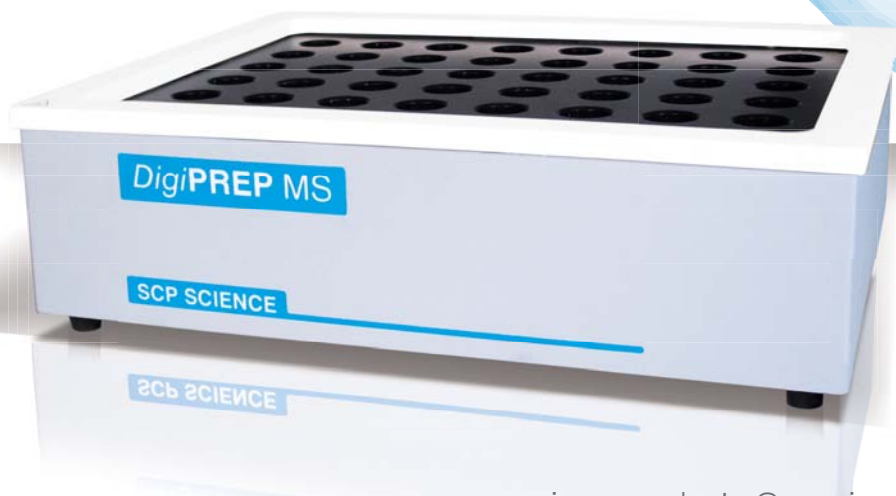
Providing Innovative Solutions to Analytical Chemists

NEW INTRODUCTIONS

**SAMPLE  
PREPARATION  
&  
DIGESTION  
SYSTEMS**



**NEW**



MK-MKG003-PTDG-3.0-E

[www.scpscience.com](http://www.scpscience.com) | [sales@scpscience.com](mailto:sales@scpscience.com)

**USA**

Tel.: (800) 361-6820

Fax: (800) 253-5549

**Canada / International**

Tel.: (800) 361-6820 • +1 (514) 457-0701

Fax: (800) 253-5549 • +1 (514) 457-4499

**Europe**

Tel.: +33 (0) 1 69 18 71 17

Fax: +33 (0) 1 60 92 05 67

**China**

Tel.: +86 (10) 58032301

Fax: +86 (10) 58032302

# New DigiPREP Touch Screen Controller

(Cat No. 010-500-250)

## Temperature Graphic Display Actual Set Temperature



- Touch Screen LED display high resolution Color
- Calibration of **DigiPROBE**
- Multi lingual display software
- Includes safety messages to aid operation
- For use with all **DigiPREP** graphite digestion blocks
- Graphic Display of heating profile
- 12 storable methods
- 6 programmable levels of time-to-temperature and time-at-temperature
- Use with **DigiPROBE** to control heating directly from the sample

# New DigiPREP Graphite Block Digestion Systems for 100 ml DigiTUBEs

(Cat. No. 010-501-210: 12 place; 010-501-230: 30 place; 010-501-250: 42 place)

## Faster Sample Evaporation and Large Sample Size with 100 ml Vessels



- Blocks accommodate New 100 ml **DigiTUBEs**
- Screw Caps and Watch Glasses available for 100 ml **DigiTUBEs**
- 3 block models with 3 capacities for every workload
- Acid protection
  - o Corrosion resistant housing
  - o Teflon® coated block
- Use with New **DigiPREP** Touch Screen or KeyPad controllers

# New DigiPREP Mini

(Cat. No. 010-510-010)

## Small Digestion System for Small Sample Loads



- 9 x 50 ml capacity
- Corrosion resistant design
- Teflon® coated graphite block
- Acid resistant housing
- Built in temperature controller
- Temperature range of Ambient to 180 °C
- Temperature set accuracy to 0.1 °C
- Temperature control accuracy to  $\pm 1.0$  °C
- Temperature well to insert thermometer (not supplied)