

◆ 25 TON MANUAL HYDRAULIC PRESS

Designed to handle a wide variety of pressing applications.

- Polycarbonate safety guards
- Adjustable upper bolster
- Adjustable pressure control valve
- Vacuum Ports
- Pressure release valve
- Optional gauges for low pressure applications (0-1, 0-2, 0-5 Tons)



Catalog # 040-020-010

◆ T25 AUTOMATIC HYDRAULIC PRESS

The T25 Automatic Hydraulic Press is programmable, microprocessor controlled, power assisted hydraulic systems. Designed for a wide variety of pressing applications including XRF and IR sample preparation.

- Intuitive user display
- Multi-sequence programming
- 6 user defined operation cycles
- Multi-Lingual Display Option in English, French and German
- Graphics Display with LED Backlight Control



SPECIFICATIONS

Max. Load on Ram (Piston)	25 Tons	Height / Weight	545mm - 640mm / 95 Kg
Load Range (0.5 Ton increments)	3-25 Tons	Display Units	Tons / Tonnes / US Tons
Top Bolster Diameter	32mm	Hold Times	0.1 to 99 minutes and infinity
Top Lead Screw Vertical Travel	90mm	Optimized Release Rates	Fast, Medium, Slow
Ram (Piston) Bolster Diameter	83mm	Stored Programs	6
Ram (Piston) Stroke	24mm	Maximum Program Segments	10
Max/Min Dist. between Pressing Faces	155mm - 40mm	Integral High Clarity PETG Safety Guards	
Sample Area (Diameter x Height)	220mm x 155mm	Power	230 V, 50 Hz, UK/EU (Cat # 040-020-015)
Base Footprint (Width x Depth)	425mm x 405mm		110 V, 60 Hz, USA (Cat # 040-020-014)
Height (without lead screw)	500mm		

www.scpscience.com | sales@scpscience.com

NORTH AMERICA / INTERNATIONAL

Tel.: (800) 361-6820/+1 (514) 457-0701
Fax: (800) 253-5549/+1 (514) 457-4499

EUROPE

Tel.: +33 (0) 1 69 18 71 17
Fax: +33 (0) 1 60 92 05 67

CHINA

Tel.: +86 (10) 58032301
Fax: +86 (10) 58032302

BRAZIL

Tel.: +55 19 8194-8488

◆ PELLET DIES

- Provide high polished pellets
- High quality hardened stainless steel gives better performance
- Evacuatable for sample pellet clarity and quality
- Dies Sets are complete with:
 - Evacuatable Die Body
 - Base
 - Plunger
- Two polished stainless steel pellets
- O-ring vacuum seals
- Knock-out ring for sample extraction

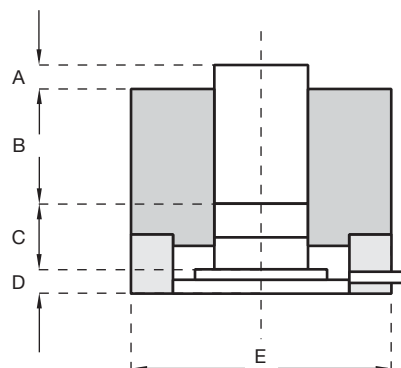


Mechanical Dimensions

Pellet Diameter	Load Limit	A (mm/in)	B (mm/in)	C (mm/in)	D (mm/in)	E (mm/in)	Catalog Number
31 mm Die Set	50 tons	21.33/0.84	35.74/1.41	19.05/0.75	27.76/1.09	68.33/2.69	040-022-200
35 mm Die Set	70 tons	21.33/0.84	35.74/1.41	19.05/0.75	27.76/1.09	68.33/2.69	040-022-300
40 mm Die Set	50 tons	21.33/0.84	35.74/1.41	19.05/0.75	27.76/1.09	95.25/3.75	040-022-400

Replacement and Optional Pellets

Composition	Pellet Diameter	Catalog Number
Stainless Steel	31 mm	040-022-201
Stainless Steel	35 mm	040-022-301
Stainless Steel	40 mm	040-022-401
Tungsten Carbide	31 mm	040-022-202
Tungsten Carbide	35 mm	040-022-302
Tungsten Carbide	40 mm	040-022-402



◆ ALUCAPS PELLET REINFORCING CUPS

- Provide lateral and bottom support during sample preparation
- Offers easy compaction due to thin wall construction
- Supplied in a convenient dispense box
- Eliminates the loss of sample overflow
 - Flared wall construction

Description	Diameter	For Die Set	Quantity	Catalog Number
AluCAP, Straight Wall	30 mm	31 mm (040-022-200)	1000	040-080-001
AluCAP, Flared	38 mm	40 mm (040-022-400)	1000	040-080-005



BINDER AND BLENDING AGENTS

Description	Chemical Composition	Catalog Number
X-Ray mix Powder, 454 g / 1 lb Bottle	48.7% C, 42.6% O, 8.12% H, 0.6% B	040-060-300
Spectro Blend, 454 g / 1lb Bottle	81.0% C, 2.9% O, 13.5% H, 2.6% N	040-060-310
Boric Acid, 1/2 g Tablets; 1000 Tablets / Bottle	77.6% O, 17.5% B, 4.9% H	040-060-320
SpectroBlend 1/2 g Tablets; 500 Tablets / Bottle	81.0% C, 2.9% O, 13.5% H, 2.6% N	040-060-312
X-Ray Mix, 1/4 g Tablets; 250 Tablets / Bottle	48.7% C, 42.6% O, 8.1% H, 0.6% B	040-060-314



www.scpscience.com | sales@scpscience.com

NORTH AMERICA / INTERNATIONAL

Tel.: (800) 361-6820/+1 (514) 457-0701
Fax: (800) 253-5549/+1 (514) 457-4499

EUROPE

Tel.: +33 (0) 1 69 18 71 17
Fax: +33 (0) 1 60 92 05 67

CHINA

Tel.: +86 (10) 58032301
Fax: +86 (10) 58032302

BRAZIL

Tel.: +55 19 8194-8488