



Microbial Contamination Testing Kit Instructions for Use

Follow all instructions carefully to minimize the potential for inaccurate results. Wear appropriate protective apparel and follow standard good laboratory safety practices.

Prepare Test:

- Place Microbial Contamination Test Media bottle on flat surface and remove the blue seal from the metal cap.
- Remove outer packaging from the provided 5 mL syringe, leaving needle guard in place until ready to perform test.
- If sample viscosity must be reduced prior to injection, combine 1mL of sample with 9mL of sterilized water in a clean container that can be closed, being careful to avoid contamination. Shake vigorously to mix. Do not allow separation to occur before performing the test.

Perform Test:

- Remove needle guard from needle tip and immediately place the needle in liquid sample. Draw plunger back, filling syringe to 5mL with sample.
- Press the needle of filled syringe through the grey rubber cap of the test bottle and plunge the syringe until all liquid sample is emptied.
- Remove needle from test bottle. Discard needle and syringe according to applicable regulations.
- Incubate bottle at room temperature for a minimum of 24 hours for bacterial growth and a minimum of 72 hours for fungal growth.

Note: distinct layers may be observed in the test bottle once the sample is injected.



Image 1: Example test bottle injected with hydraulic fluid sample.

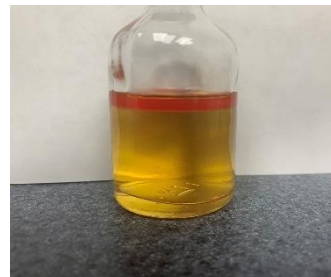


Image 2: Example test bottle injected with diesel fuel sample.

Evaluate Test Results:

After the incubation period, evaluate the test bottle for changes:

No Growth Detected

Color and transparency of test bottle is unchanged from the start of the test.



Growth Detected

Contents of test bottle is red. Visible clumps or turbidity may also be present.



Disposal of Test:

Under a fume hood fill the bottle with bleach and let sit for 24 hours. Follow current industry standards and local regulations for disposal of contaminated waste. Empty glass bottles are recyclable.

Storage:

Store unused test bottles at room temperature. See bottle label for specific temperatures.

User Responsibility

Users are responsible for familiarizing themselves with product instructions and information. It is important to recognize that external factors such as sample collection and handling methods, testing protocols and laboratory technique may influence results. It is the user's responsibility when selecting any test method or product to evaluate that it meets the user's criteria and the requirements of their application and customers.

Analytichem terms and conditions apply.